



# California's Dairy H5N1 Surveillance

Nicki Humphrey, DVM

California Department of Food and Agriculture

Bovine and Swine Veterinarian Specialist

# H5N1 California Recap

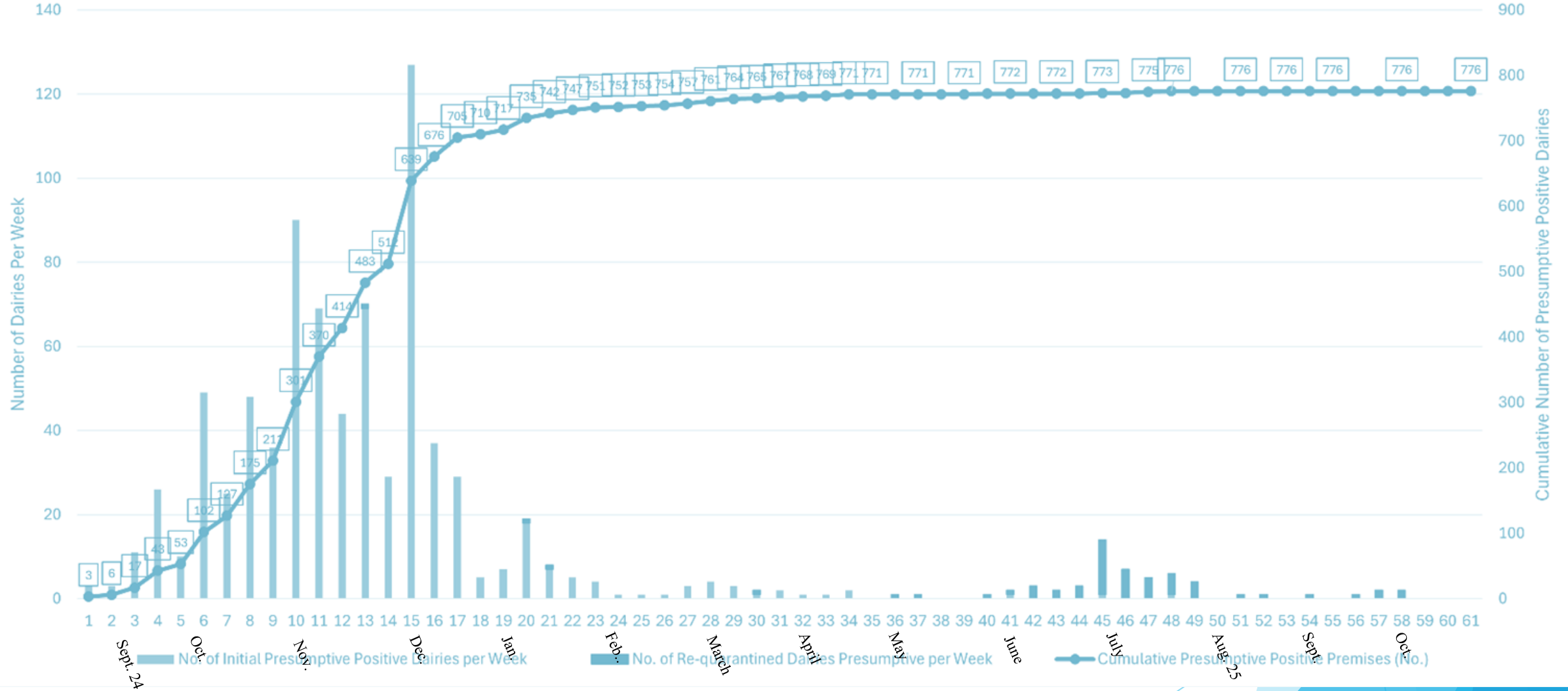
## Dairy:

- Confirmed August 30, 2024
- Day 1: 3 herds
- Within 30 days: 43 herds
- Within 60 days: 175 herds
- Total: 776 herds

## Poultry:

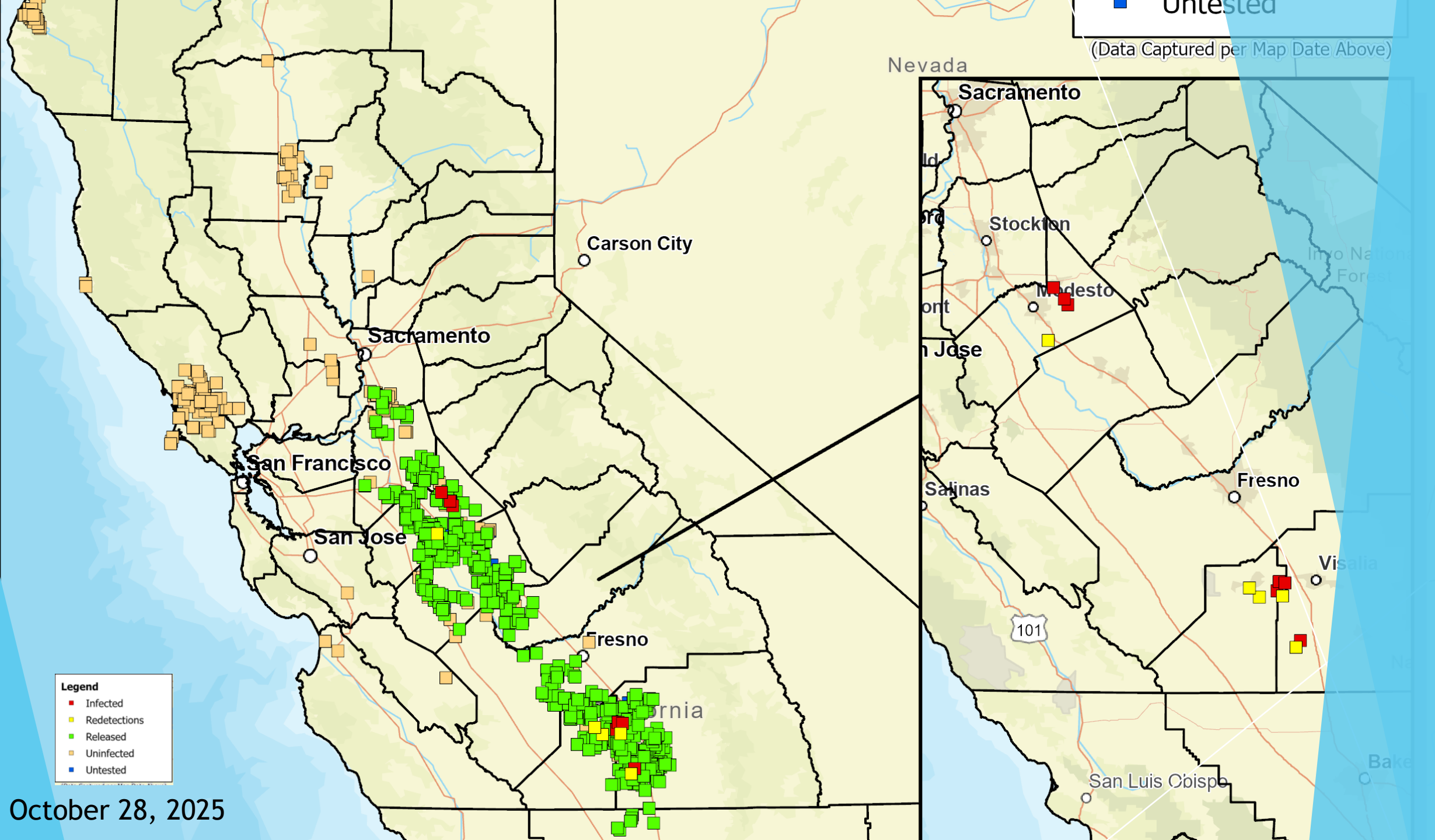
- First detection: on Sept 18, 2024
  - ~150 miles from genetic-linked dairy
- Second detection: (~ 30 days later) Oct 16, 2024
- Within 60 days: ~ 30 poultry prems
- Last detection: February 12, 2025
- Total: 79 commercial and backyard poultry prems

## 2024 H5N1 in Dairy Cattle: Total No. of Presumptive Positive Dairies with No. of Presumptive Positive Initial and Requarantined Dairies per Week



Redetection: ~ 58

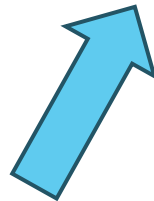
■ Untested  
(Data Captured per Map Date Above)



- Legend**
- Infected
  - Redetections
  - Released
  - Uninfected
  - Untested

October 28, 2025

# It was a lengthy process to verify dairy locations...



cdfa Animal Health and Food Safety Services  
EMERGING THREATS INFORMATION SYSTEM

MAIN MENU ANIMAL HEALTH Core Reports

### Core Reports

**Core Operations** Back

Primary Type: Production Unit (Farm) Operation Type: Cattle - Dairy Farm  
Status ID: Active District: Redding, Modesto, Tulare, Ontario  
County: Alameda, Alpine, Amador, Butte, Ca

View Report

1 of 2 ? Find | Next

Cattle - Dairy Farm List for: Active Operations

EMRS EMRS

Search

Show Chart Refresh Visualize this view Email a Link Flow Run Report

Animal Groups Structures Investigations

CA HPAI 2024 Domestic Livestock Tally Sheets-MM

Name Special ID County Premises Animal Business Product Species

# Dairy Surveillance Sample Collection

August-September 2024



Producer Collected  
and/or CDFA Personnel

September-December 2024



Milk Inspector Collected  
And/or CDFA Personnel



November 2024-Present



Creamery/Milk Lab Collected  
CDFA Personnel for hard to collect

# Dairy Surveillance is Resource Intensive

Resource	Hours/Week Early Outbreak	Hours/Week Peak Outbreak	Hours/Week Current
Surveillance Coordinator Dairy	60	80	45
Laboratory Coordinator	20	40	20
Sample Pick Up & Packaging			
Milk Quality Laboratory Sample Handling	N/A	10	3
Results Coordinator	N/A	80	40?
Epidemiology Support	80	120	5

# Managing the Laboratory Onslaught

- ▶ Lab testing priority list in the IAP
- ▶ Lab testing - Used NAHLN
  - ▶ 2000-3000 tests/week
  - ▶ Poultry stat & movement (24 hr. TAT) → CAHFS
  - ▶ Surveillance → of out state
- ▶ Critical positions:
  - ▶ Surveillance leads (poultry & dairy)
  - ▶ Lab Coordinator

## Challenges:

Volume of testing  
Coordination  
DRO & Doc Unit resource needs

- ❑ Dairy → Cornell
- ❑ Poultry 10/20K → Iowa
- ❑ Env Sampling → MN
- ❑ Research → Colorado
- ❑ Others → Wisconsin

# Dairy Result Communication

## Challenge:

Dairymen didn't know who to contact

Messaging results

- ▶ Through the IMT/CDFA staff (not direct to producer)
- ▶ Focused on non-negatives
- ▶ Changed over incident as positives increased
- ▶ CDFA vet with verbal quarantine; quarantine hand delivered by any staff within 24 - 48 hours
- ▶ Anyone able to make first contact (30+ positives/day)
  - ▶ Results coordinator
  - ▶ Case Managers
  - ▶ CDFA staff
- ▶ Now - 2 full time results coordinators who email negative results; District vet call with positives
- ▶ Working to message results directly from lab to producer

# Current Surveillance & Quarantine

- ▶ Current Testing: ~ 1100 tests/week
  - ▶ CAHFS > Cornell > WVDL
- ▶ Goal:
  - ▶ Every dairy in Valley and So Cal: q 3-4 weeks
  - ▶ Every dairy in Northern Calif: q 1-2 weeks
  - ▶ Raw to consumer dairies: weekly
- ▶ Quarantine naïve herd: CT < 40
- ▶ Redetection: CT < 35
- ▶ Re-Quarantine of previously infected herd: CT < 30

## Challenges:

Meeting surveillance timeline goals  
DRO & Doc Unit resource needs



# Surveillance Lessons



Important to set data entry standards up front



Producers need to receive timely results



Important to conduct regular Quality Control on premises data



Identify alternative sampling avenues in peace time

# Questions?

Acknowledgments: CDFA, USDA, NAHLN, NVSL  
staff - herculean effort!

Nicki Humphrey, DVM  
CDFA: Bovine and Swine Veterinarian Specialist  
[Nicki.Humphrey@cdfa.ca.gov](mailto:Nicki.Humphrey@cdfa.ca.gov)  
(916) 719-9434