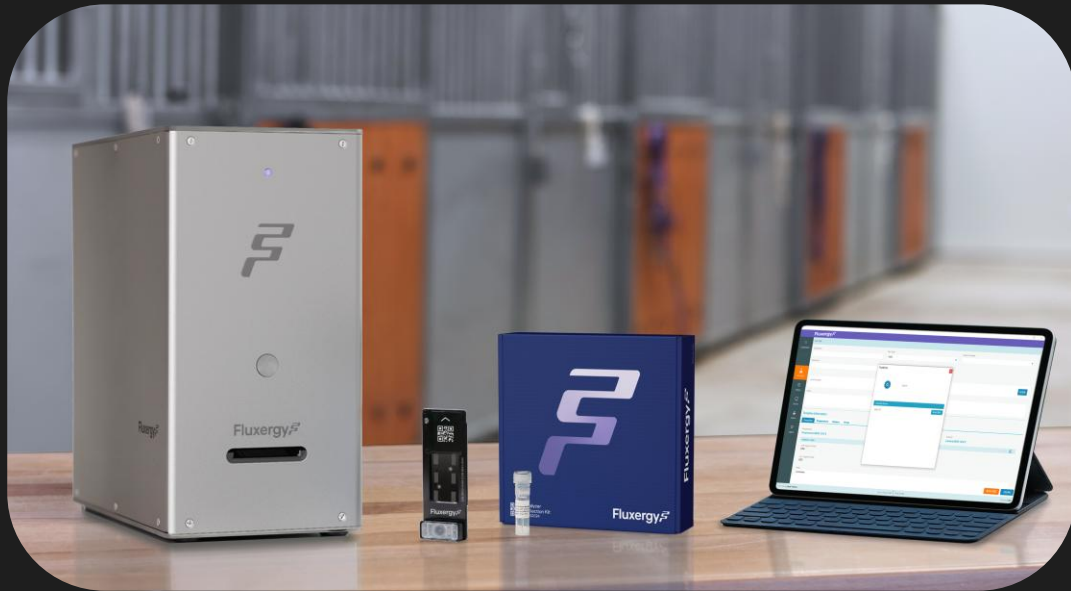


Fluxergy



Easy-to-use & reliable assays to improve your on-site laboratory and facilitate better care

2025's Updates

Eric Mendonsa BS, Equine Product Director

Nick Tran BS, Director of Quality and Regulatory

Fluxergy 

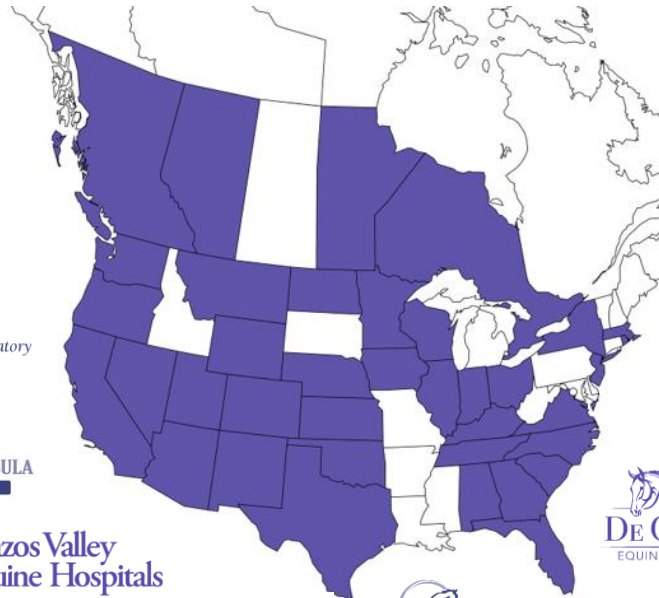
Proprietary & Confidential

Journey in Equine Laboratory Testing

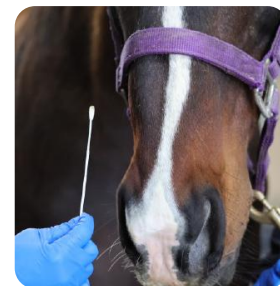
- ✓ The first rapid on-site PCR analyzer for equine practice laboratories
- ✓ 8 years in the equine veterinary R&D
- ✓ 130 equine practices installed to date
- ✓ 4 assays available including Equine Multiplex Panel (RUO)
- ✓ 2 Active USDA Licensing submissions
- ✓ Compliance to ISO 13485, FDA 21CFR and USDA 9CFR



39 states & provinces with
Fluxergy Analyzer



Streamlined Workflow / PCR Results within 1 hour



1



2



3



4



Commitment to USAHA 2024 POCT Resolution #8

RESOLUTION:

The United States Animal Health Association (USAHA) urges the United States Department of Agriculture (USDA), Animal and Plant Health Inspection Service (APHIS), Veterinary Services (VS) Center for Veterinary Biologics to require that sale or use of point of care tests/testing for an equine disease listed on the USDA National List of Reportable Animal Diseases be restricted to licensed and accredited veterinarians.

Fluxergy Works v3

Fluxergy

Run Test

Dashboard

Toggle Assay: Equine Influenza Virus Equine Herpesvirus 1 Streptococcus equi su... Equine Herpesvirus 4

Test Name*
ForDemoOnly01

Test Type*
PCR

Operator Name*
Nick Tran

Card Serial Number*
123456789

ⓘ For Research Use Only (RUO). Not for use in diagnostic procedures.

Sample Details

Sample ID
Enter Sample ID

Sample Type
Nasal Swab

Enter more details

Veterinarian Name
Enter Veterinarian Name

Owner Name
Enter Owner Name

Admin

Logout

- ✓ Fluxergy Works software now includes Sample Details with Veterinarian Name.
- ✓ All current equine practices that use Fluxergy RUO POCT have an assigned veterinarian.

Compliance and Collaboration

- ✓ Continue pursuit of biologics licensure with USDA CVB under VSM 800.73:
 - Development studies are near completion (LoD, Analytical Specificity, Ruggedness)
 - Verification studies are being planned (Serial Release, Confirmation of Dating, Diagnostics Sensitivity/Specificity, Interlaboratory Comparison)
- ✓ From customer's onboarding through continuous education, Fluxergy emphasizes on meeting compliance requirements with both USDA and state authorities, especially for equine reportable diseases.
- ✓ Fluxergy continues active engagement with CVB and state animal health officials for transparency and alignment.
- ✓ Fluxergy is an active member of AVBC (Association of Veterinary Biologics Companies), a true advocate for the veterinary biologics industry.



Thank you!